

# FOVEA

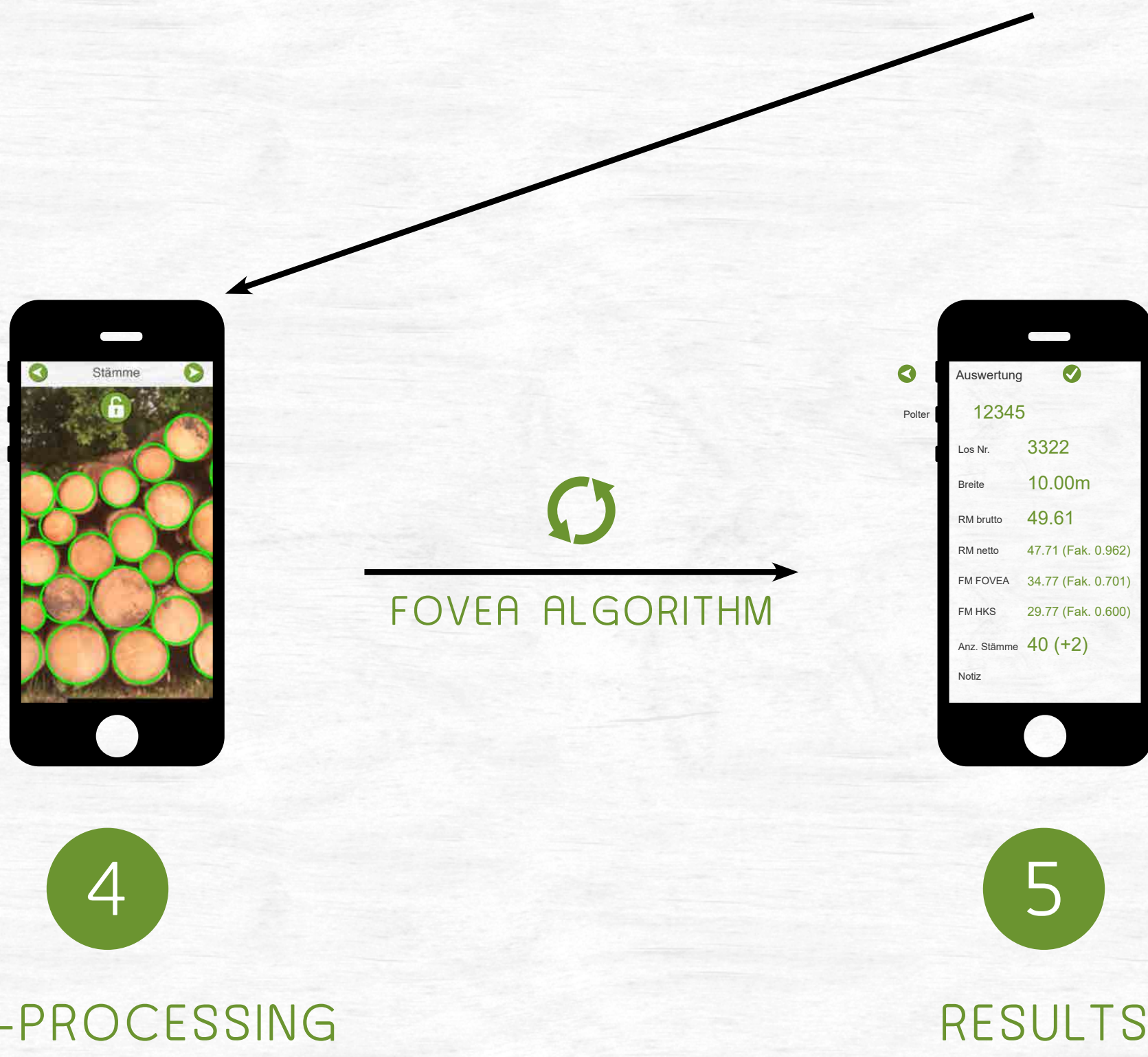
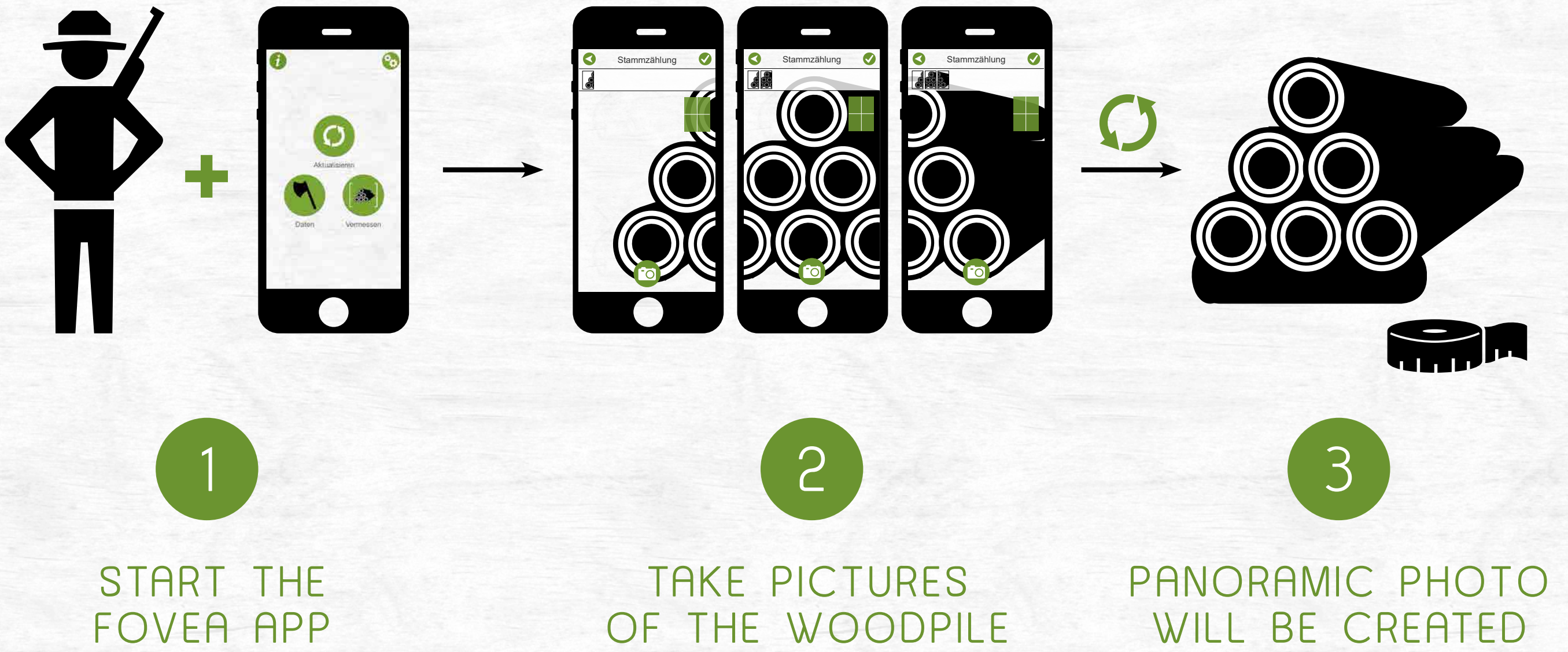
---

## QUICK START

How to achieve  
optimal results quickly

The full manual is available  
at [www.fovea.eu](http://www.fovea.eu)

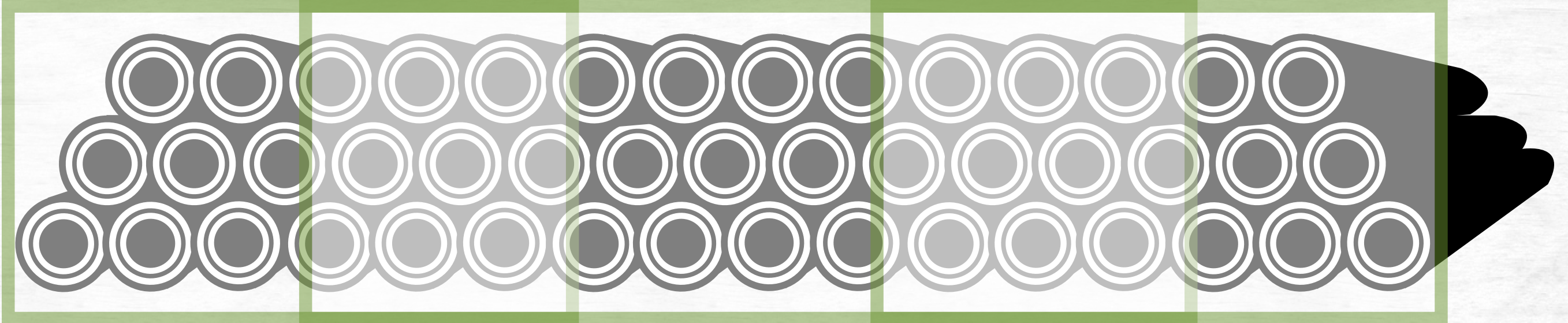
# How to proceed



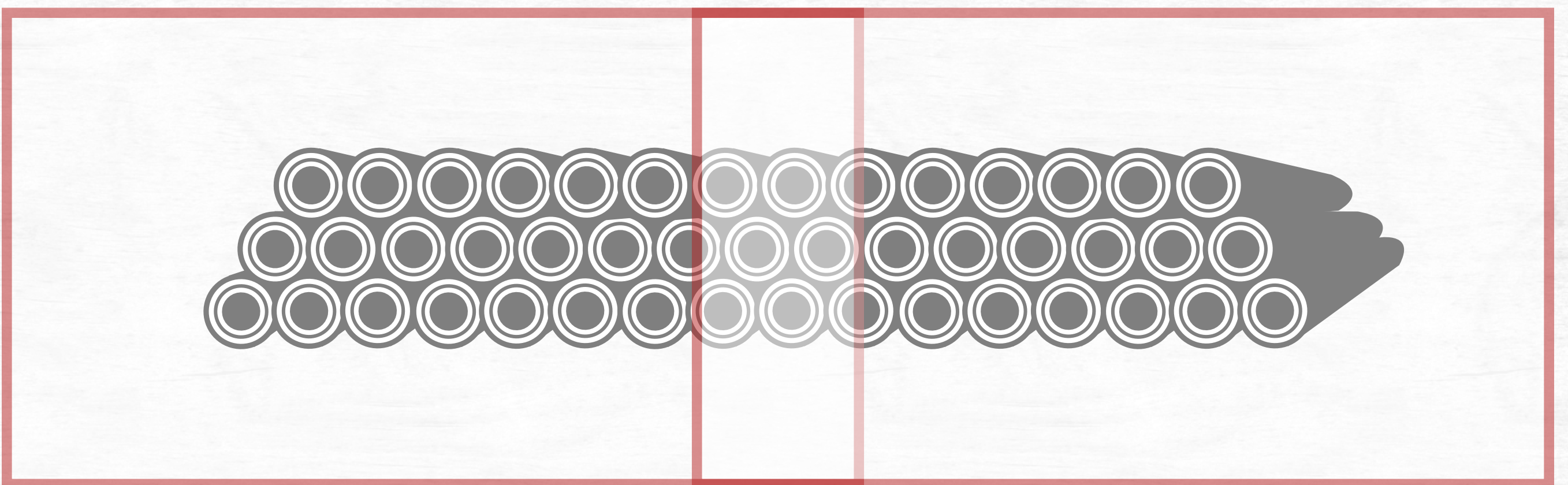
6 EXPORT DATA / SYNCHRONIZE WITH THE FMS



# Distance to the woodpile



Select distance: woodpile takes up approx. 85% of the photo height.



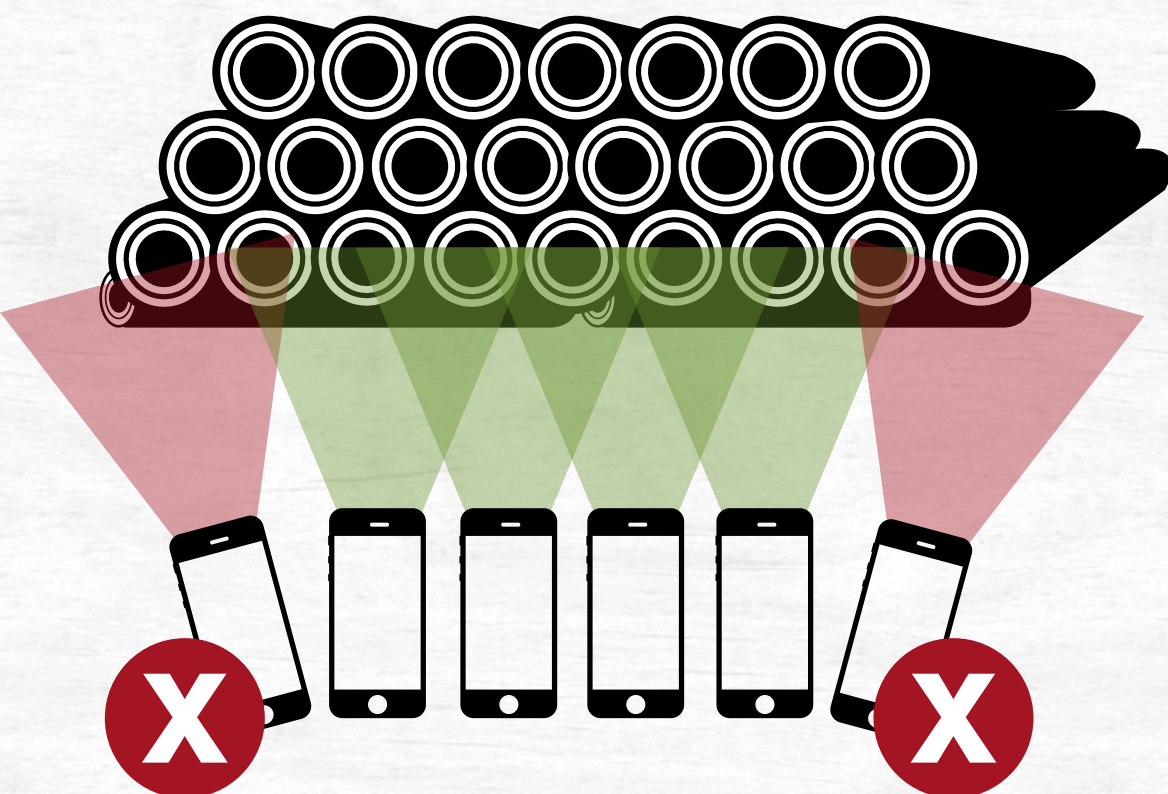
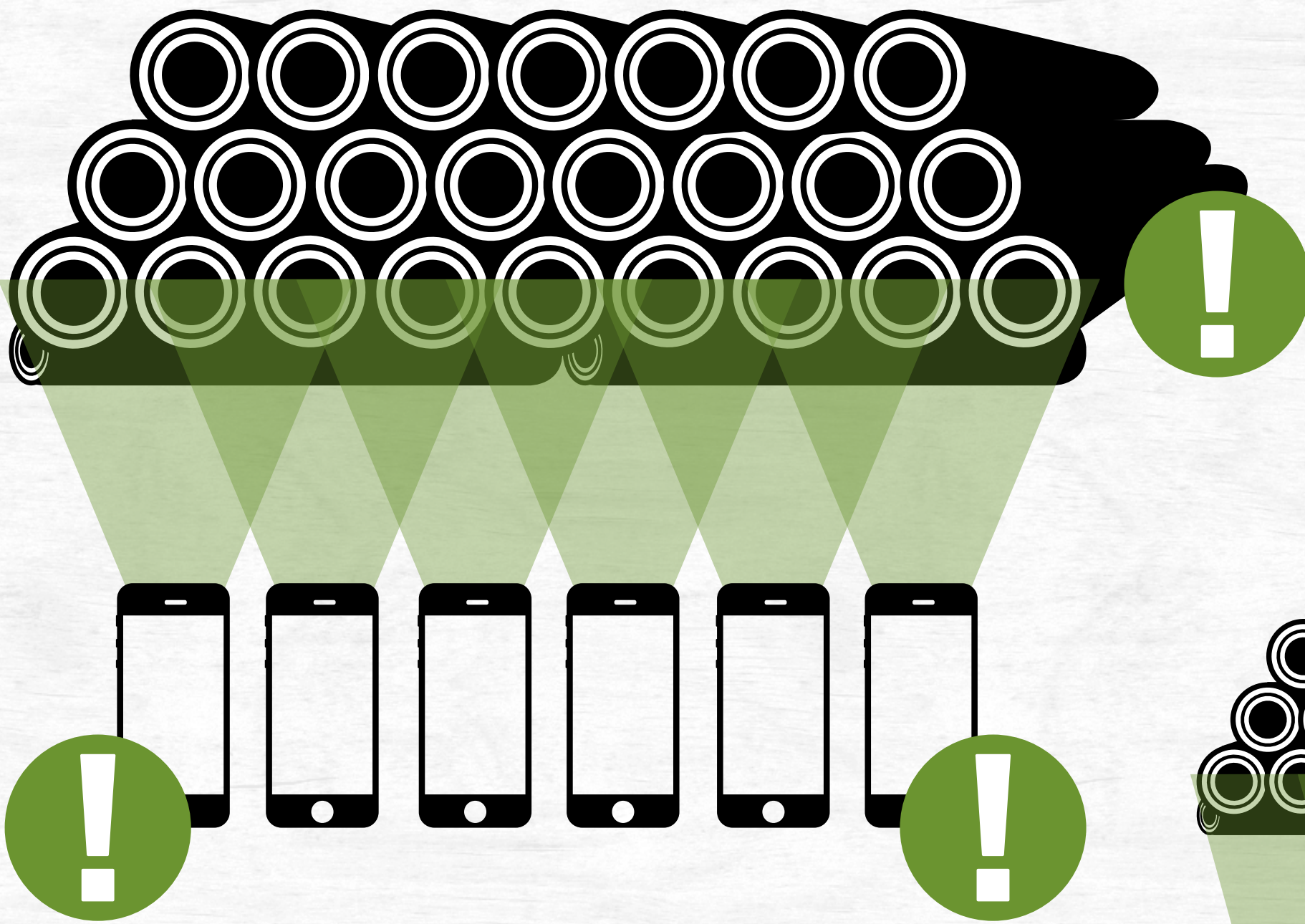
**Wrong!**

Optimal results will be achieved when the bottom edge of the woodpile is in parallel to the photo.

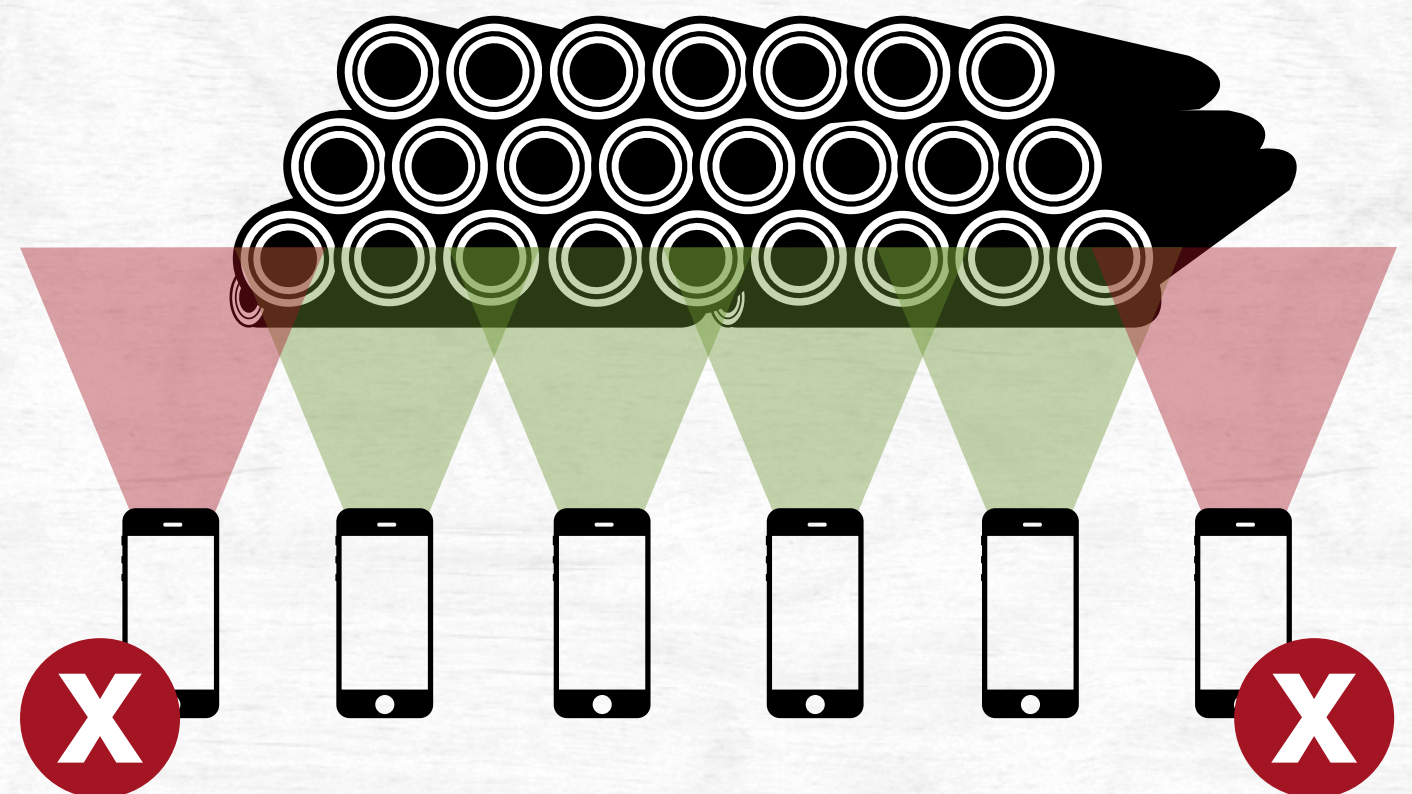
**Woodpile height up to 3 m** Distance 2 to 4 m

**Woodpile height more than 3 m** Distance 3 to 5 m

# Holding the device correctly



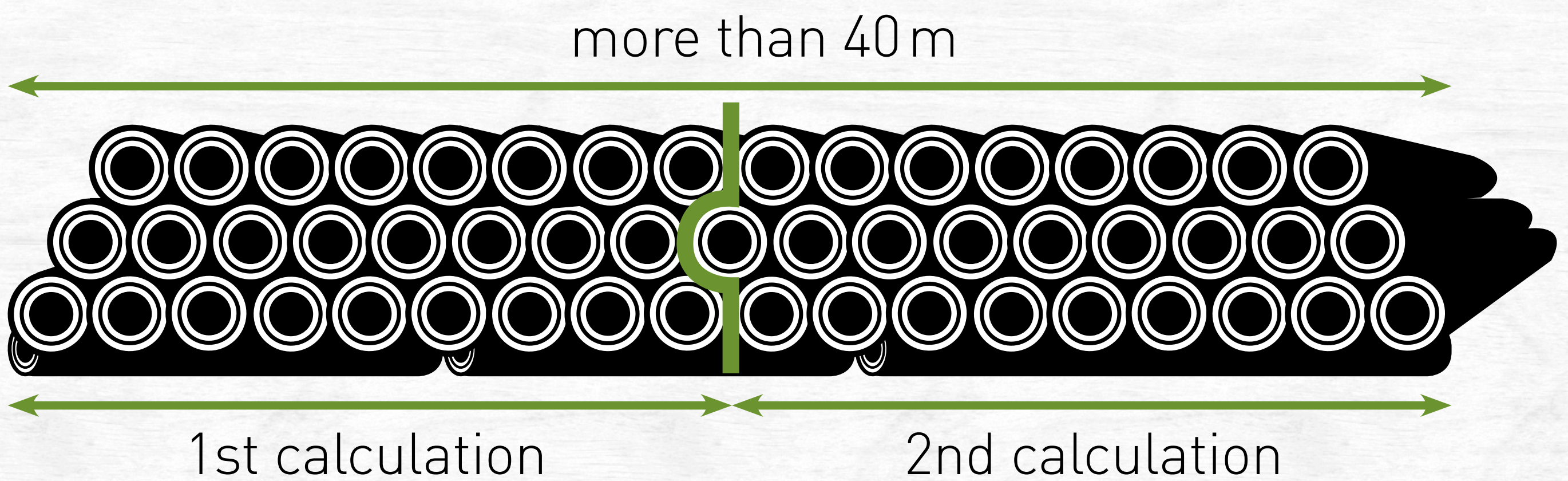
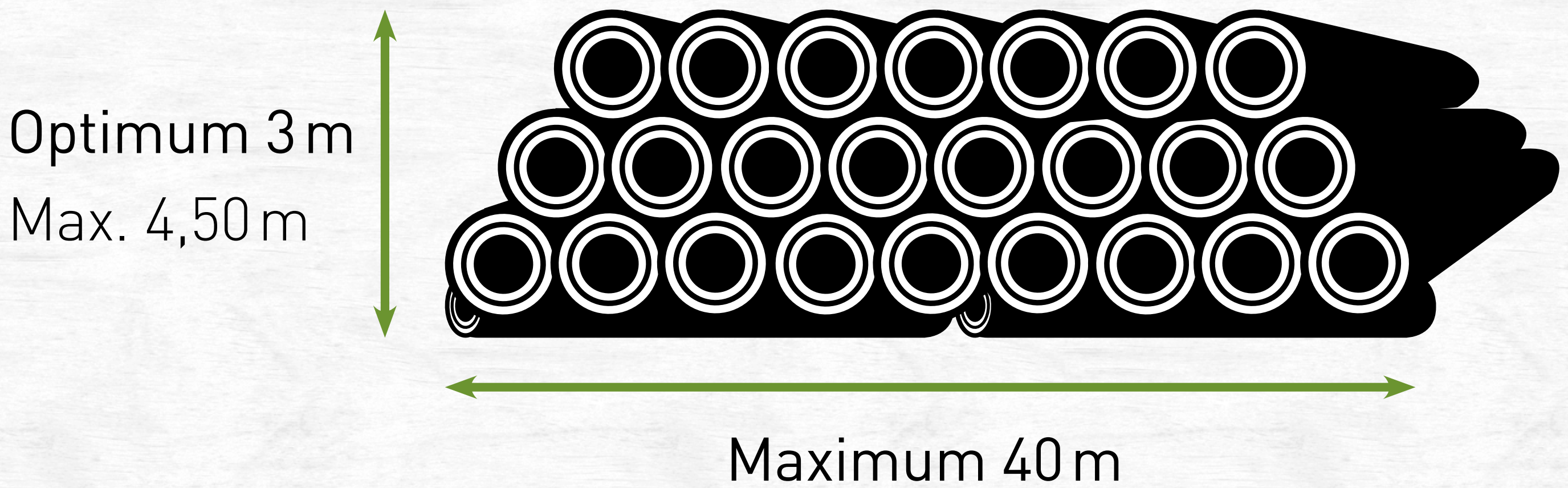
Photos not in parallel



Photos beyond outer bounds

- Camera has to be in **parallel** to the pile.
- Distance between photos should be **constant**.
- The **first and last photo** of the woodpile are most important for a correct result.
- Keep device **vertically**.
- Photo overlap should be at least **60%** (step one meter to the side).

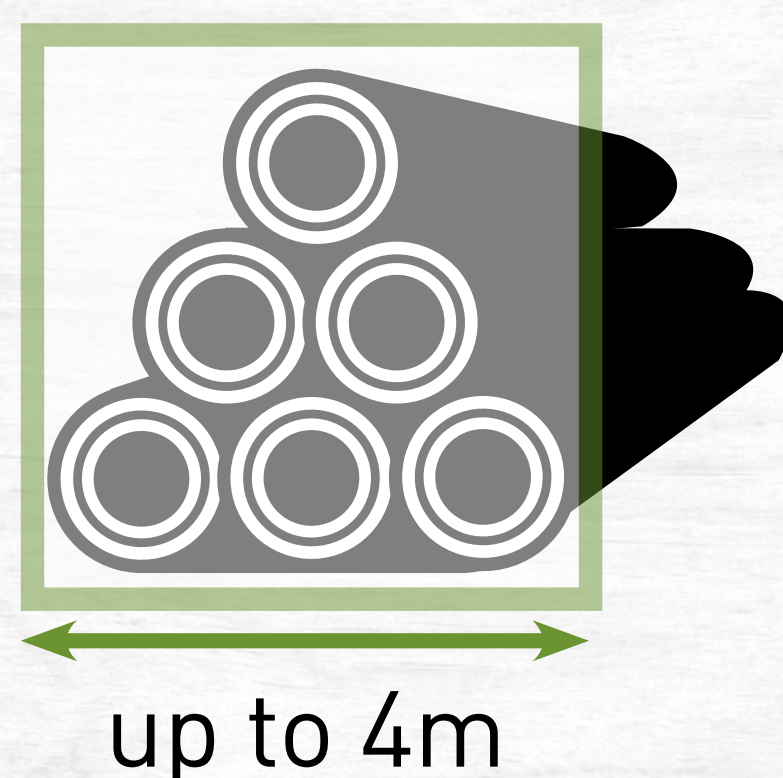
## Woodpile dimensions



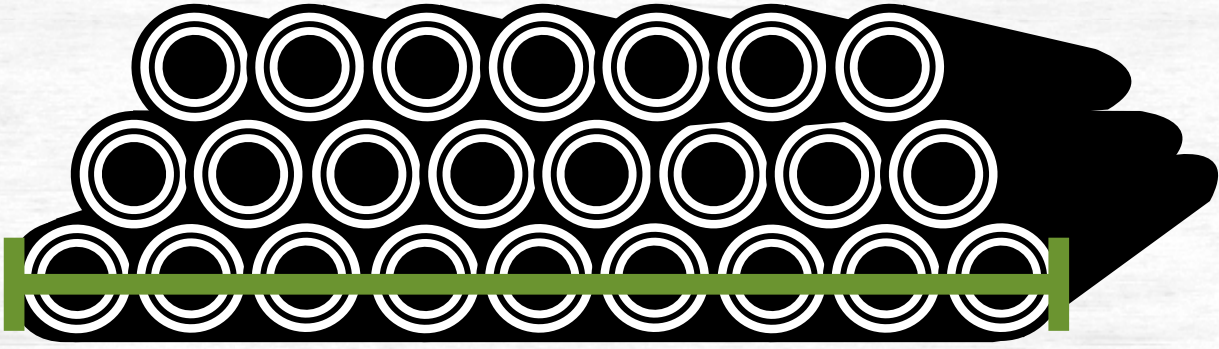
**Mark separation with spray paint.**

For a pile with a **width greater than 40 m** divide the **woodpile** into sections (Ill. above). Measure each section as a separate woodpile.

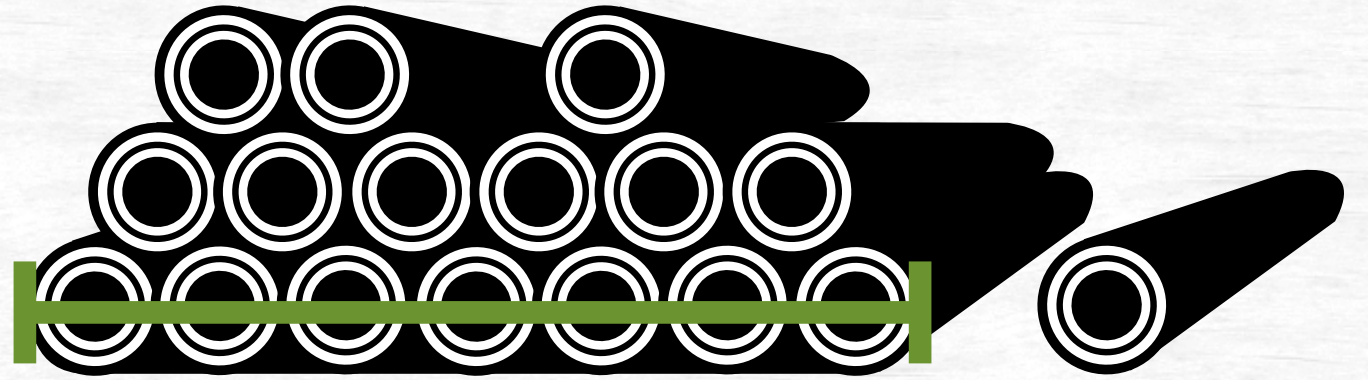
Piles with a **width under 5 m** should be measured using **just one image**.



# Measuring the woodpile width



Mark the measurement points significantly with spray paint to find them easily in the picture.



The right woodlog is entered as an underlay.

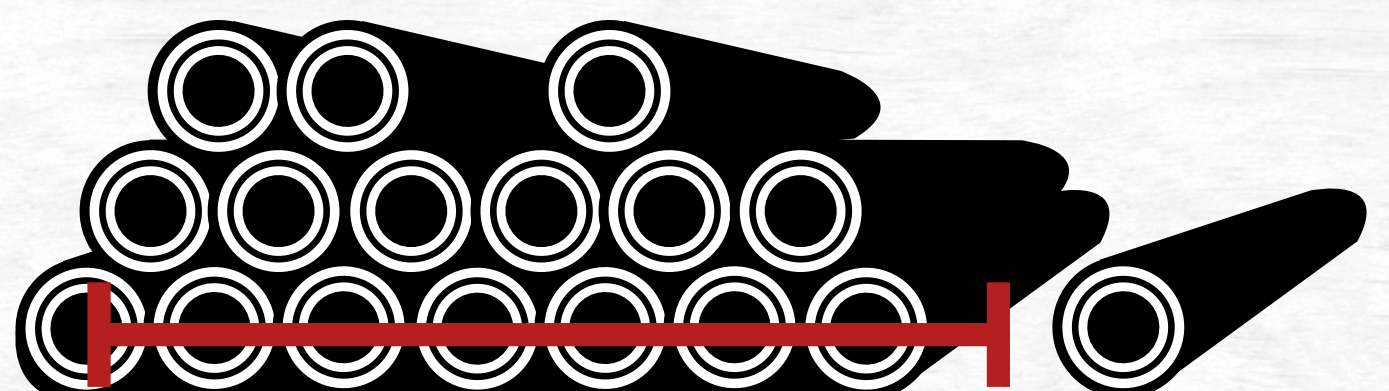
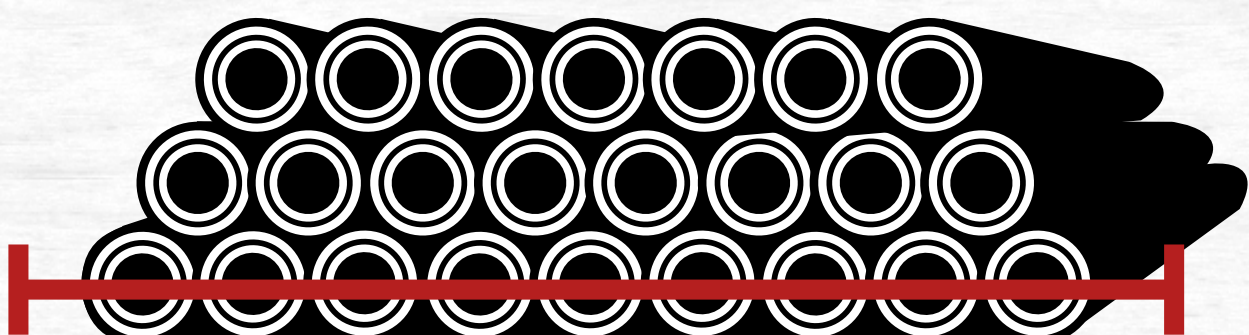


Measure inch-perfect!

**Measure the widest part of the woodpile inch-perfect!**

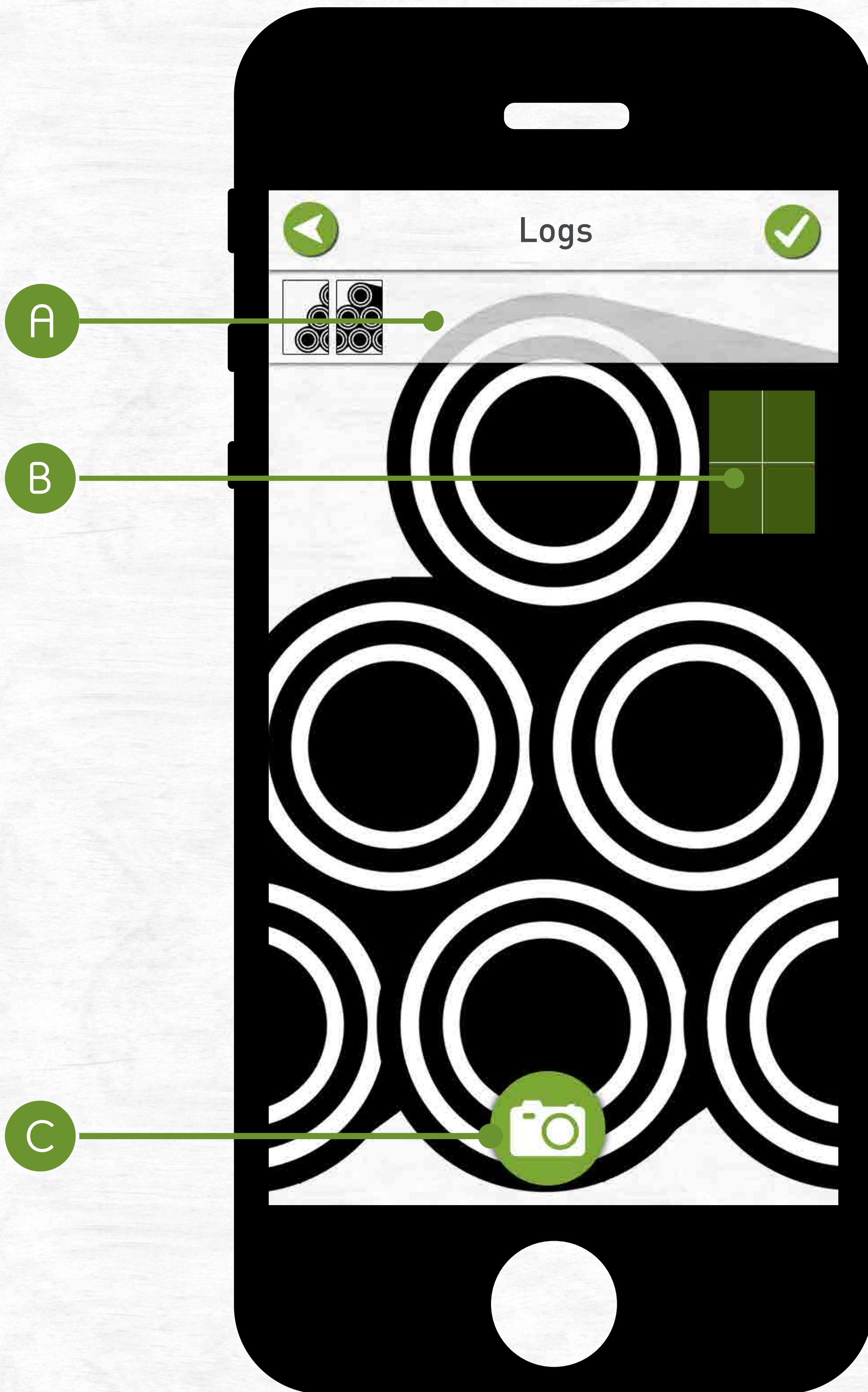
From the far left side of the leftmost woodlog to the far right side of the rightmost woodlog.

**Wrong:**



# Photooptical Calculation

Take photos of the woodpile



**Preview overview (A)** All photos of the current woodpile

**Vertical pose notification (B)** Optimal results can be achieved if the device is in parallel to the woodpile (green rectangle on the screen)

**Take photos (C)** Generate a photo by pushing the camera button on the screen

# Photooptical Calculating

## Light intensity adjustment



Badly illuminated picture caused by backlight.



By setting the focus to the darker area of the preview a better result can be achieved.

During strong lighting condition, the **focus can set** to the darker area of the image which changes the exposure of the camera. Adjust the focus so that the trunks are clearly visible.

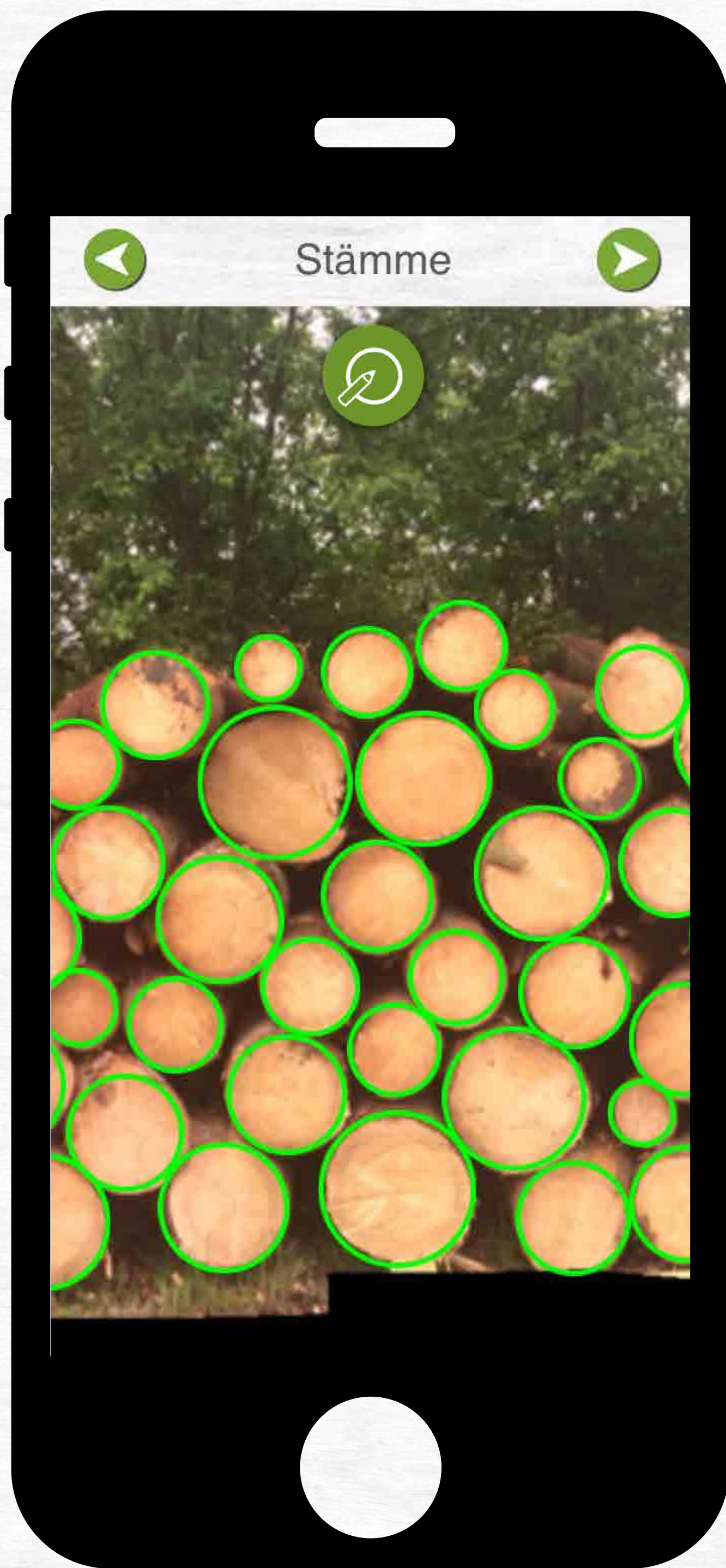


With strong backlight **move your hand above the camera.** The exposure will then automatically be adjusted.

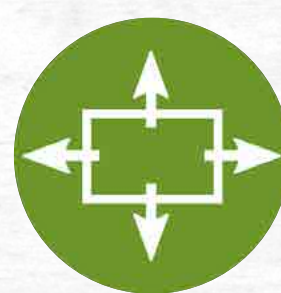
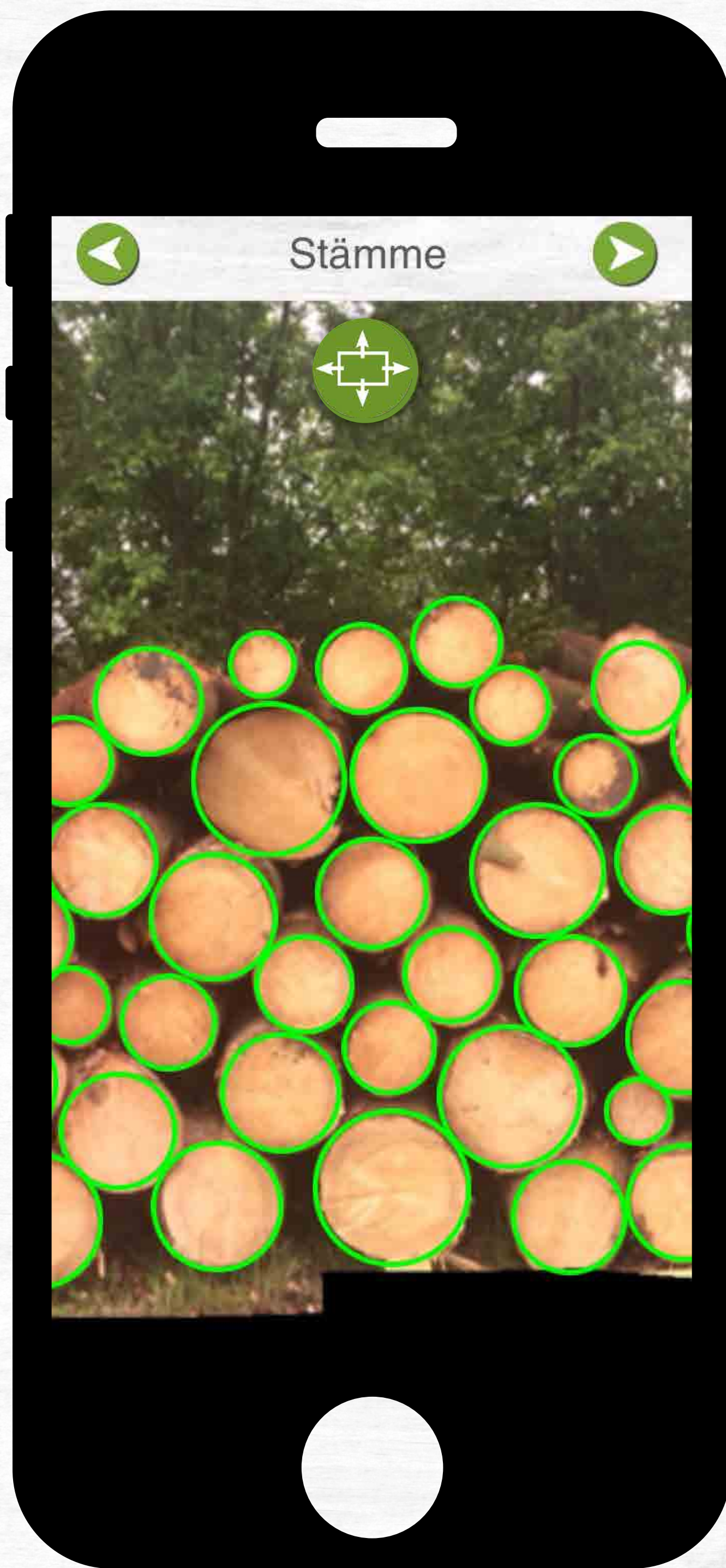


# Photooptical Calculating

## Post-processing



**Circle markers can  
be modified**



**Picture is scalable and  
can be moved**

# Photooptical Calculation

## Post-processing

**Note!** The post-processing of the photo is only possible **right after the shooting**. A correction at a later time is not possible.

**Tip!** For an easy editing it is recommended to enlarge the photo significantly.

.....

### Delete circle

Touch circle marker and hold

### Add circle

Touch the unmarked log briefly in its middle

### Move circle

Move the circle to a new position by dragging your finger across the screen without losing contact

### Increase/Decrease circle size

Mark the circle and then use the ruler on the side of the screen to change the size.

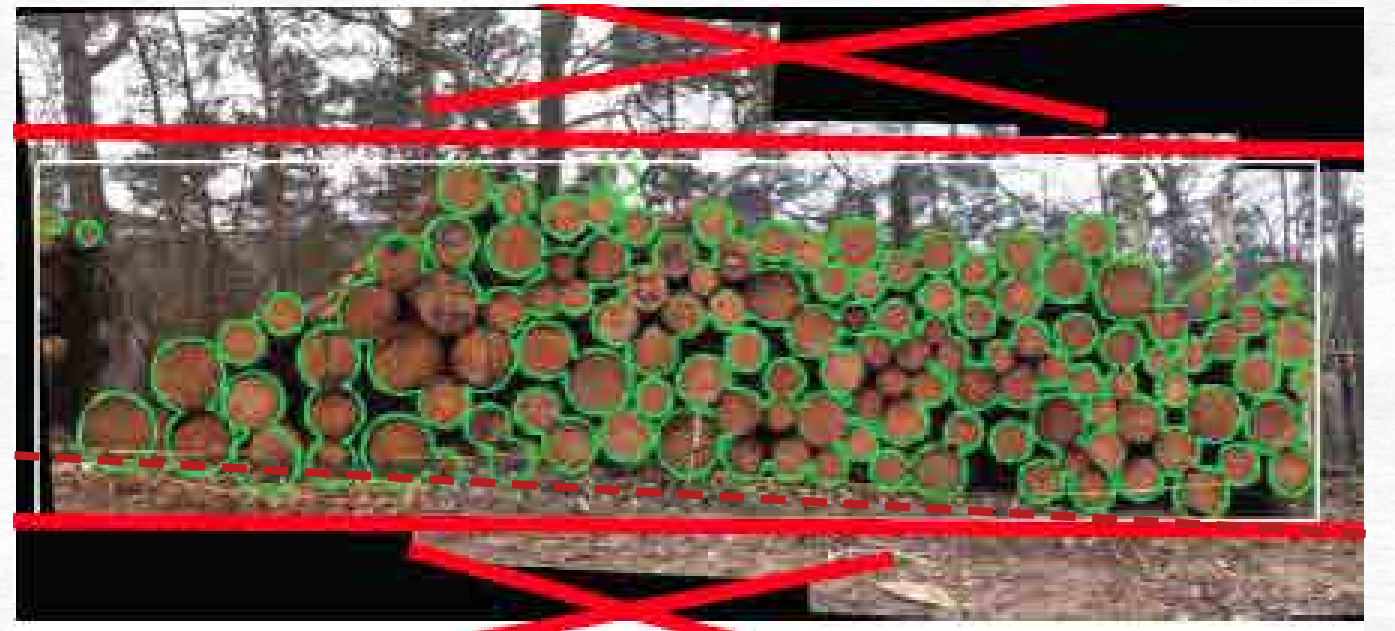
.....

**Both outer logs (left and right) have to be marked as exactly as possible!**

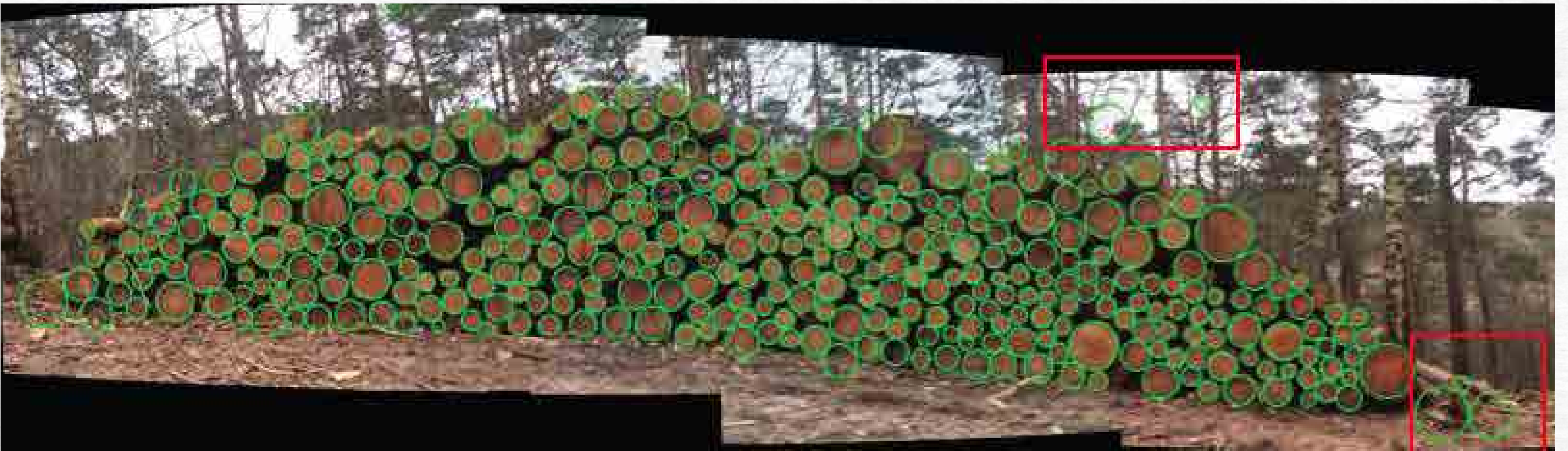
## Common mistakes



Individual photos have not been captured in parallel to the woodpile (Fig. above/right). The panoramic image is deformed.

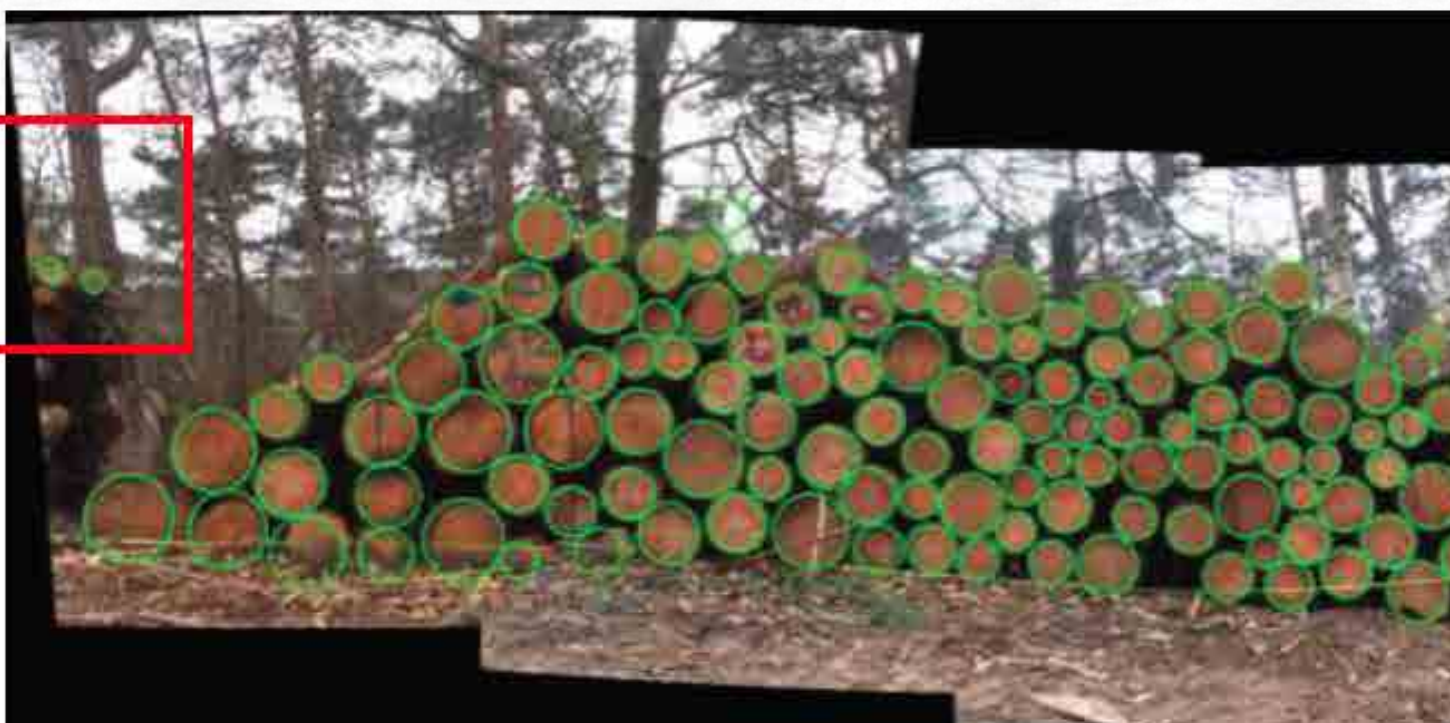


.....



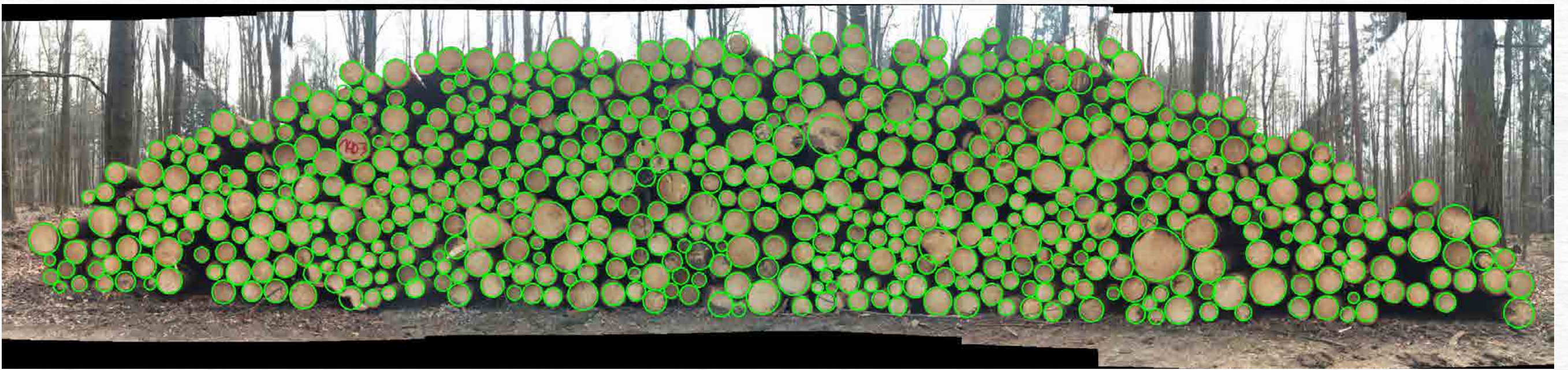
Incorrectly marked woodlogs have not been removed. The image section has not been chosen correctly; a second woodpile in the background has been recognized.

.....



Incorrectly marked woodlogs have not been removed. The woodpile has to be post processed.

# Avoid mistakes



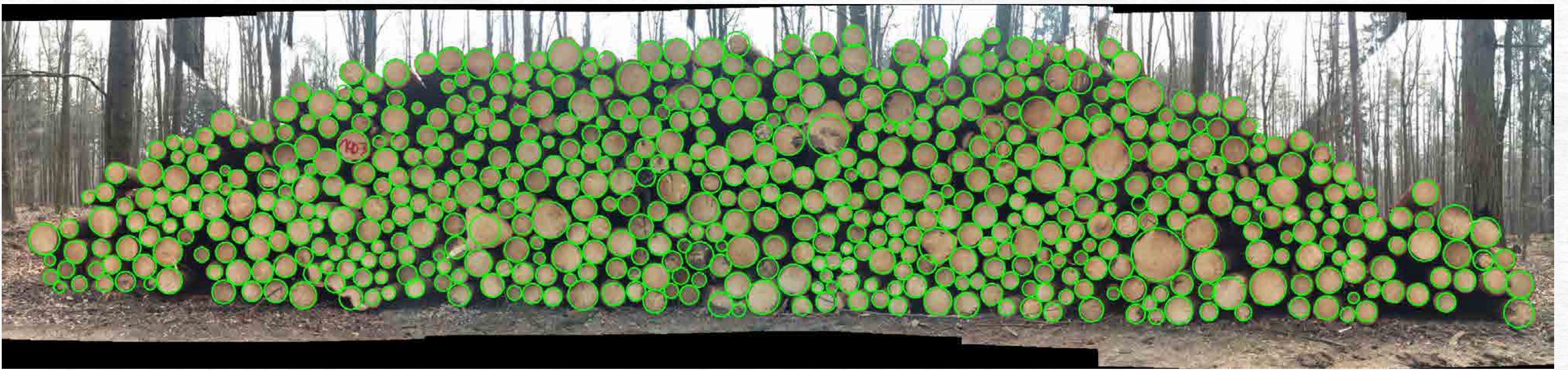
This is how the result should look like.

Are pictures stitched incorrectly? Check:

- Did you keep a constant **distance** to the woodpile?
- Are pictures **overlapping** with a minimum of 60%?
- Was the device held **vertically to the pile** (green orientation rectangle)?

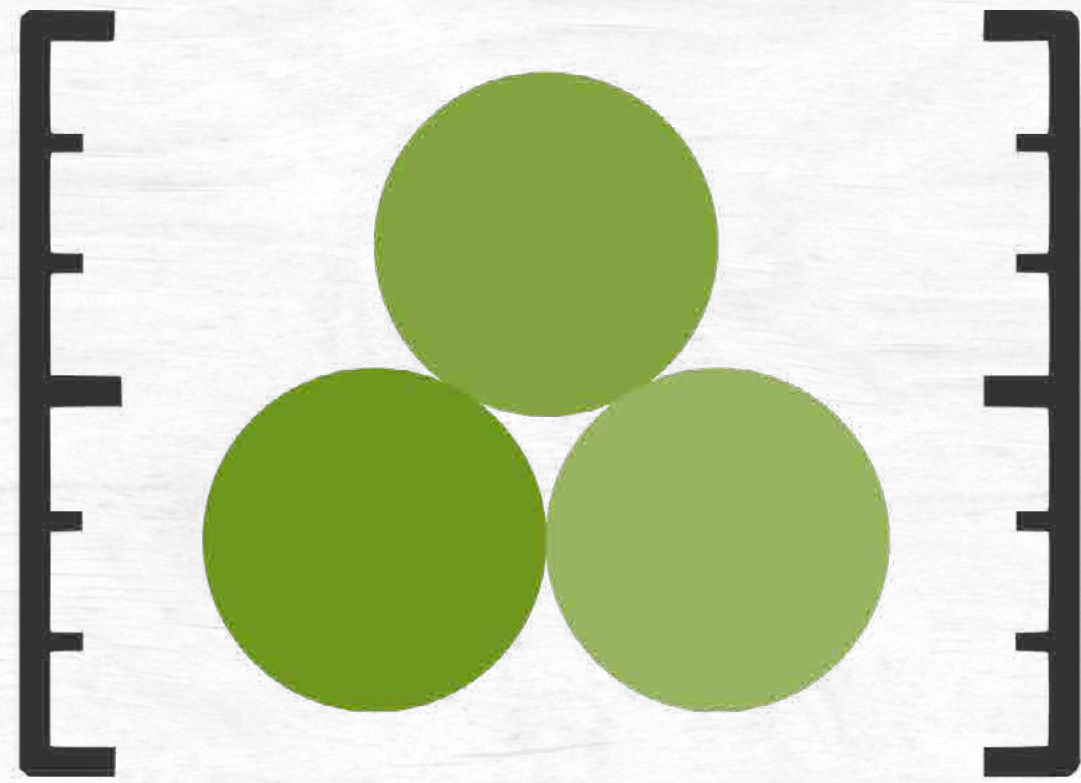
If pictures are not stitched correctly please send them to [support@fovea.eu](mailto:support@fovea.eu) for further investigation by our software engineers.

# Optimal Result



## Best results can be achieved considering this points:

- The wood should be **as fresh as possible**.
- Woodpile takes up approx. **85% of the photo height**
- Camera has to be in **parallel** to the pile.
- Distance between photos should be **constant**.
- The **first and last photo** of the woodpile are most important for correct counting.
- Keep device **vertically**.
- Photo overlap should be at least **60%** (step one meter to the side).



# FOVEA

The full manual is available  
at [www.fovea.eu](http://www.fovea.eu)